

# PIPE FABRICATION

## Services

- Carbon & Alloy Pipe Fabrication
- Induction and Cold Pipe Bending
- In-house Non-destructive Examination
- On-site Stress Relief
- Enclosed Climate Controlled Blast & Coating Facilities
- Skid and Module Construction
- Real Time Internet Status Reporting
- Engineering
- Large Bore Heavy Wall Fabrication
- Blast and Coating Services
- Computerized Spool Tracking

## Engineering

Shop spool drawings are produced manually or automatically extracted electronically using *Spoolgen Alias* software.

Automatically creating spool drawings from electronically transmitted 3D isometric files, this software can also automatically replace weld-in elbows with induction or cold bends.

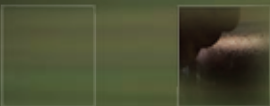
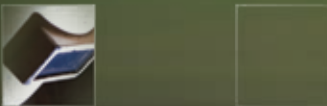
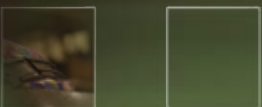
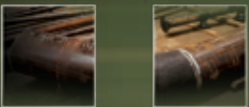
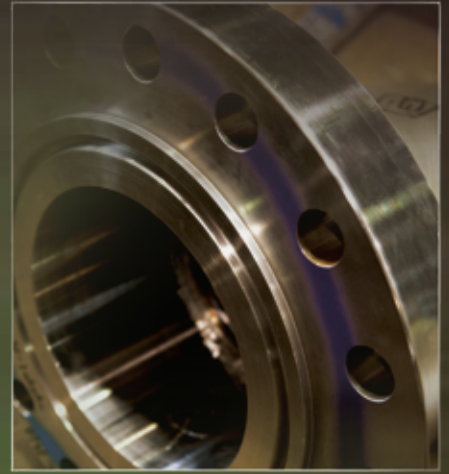
## Large Bore Heavy Wall Fabrication

Our Louisiana operations have a 37,500 square foot fabrication bay dedicated to the fabrication of large bore and heavy wall process and power pipe spools. Equipment and features include:

- Two (2) Boring Mills With 42" O.D. Machine Capacity
- 25' Height Under Hook
- 35 Ton Tandem Lifting Capacity
- On-site Stress Relief Furnace

Our Texas operations are uniquely qualified to fabricate large bore and heavy wall pipe spools typically found in cogeneration and coal fired power plants. Equipment and features include:

- Boring Mill with 72" O.D. Machining Capacity
- 29' Height Under Hook
- 200 Ton Tandem Lifting Capacity
- Two (2) Stress Relief Furnaces (75' Spool Capacity)
- Craneways Extending 250' (From The Ends of Each Bay)





# PIPE FABRICATION



## **Skid and Module Construction**

Turner has fabricated process skids and modules for the chemical process, transmission and oilfield industries. Our Louisiana operations are strategically located on the intra-coastal waterway and can barge skids and modules anywhere in the world.



High ceilings, heavy lifting capacity and structural welding capabilities give our Texas operations the versatility to produce a variety of skids and modular components. Additional craft requirements including E & I are available through affiliated Turner Divisions.



## **Blast and Coating Services**

Our state-of-the-art climate controlled facilities are equipped with recoverable grit blast booths and are capable of painting single and multiple coat systems regardless of weather conditions. Enclosed climate controlled blast and coating facilities allow us to maintain production, quality and scheduled delivery of pipe spools to the field. In addition to painting pipe spools, our facility can quickly blast and paint straight run pipe for field run rack piping, valves, loose fittings and structural components.

Both Louisiana and Texas operations are capable of fusion bond epoxy coating for gas transmission and products pipeline applications and metallizing for a variety of applications, including a solution to corrosion under insulation.



## **Computerized Spool Tracking**

We are the recipients of the CIO Magazine Award for our Internet status reporting systems. Barcodes affixed to spool sheets in engineering uniquely identify every spool that enters our shops. Barcodes are scanned at specific production points providing real time status information to our AS400, the heart of our computing system. Clients are given secured access to a variety of status reports via the Internet. These reports provide real-time status of spool progress and give our clients the flexibility to modify spools and change the priority or schedule of specific spools.



**Louisiana Pipe Fabrication Operation:**  
1700 South Westport Drive  
Port Allen, LA 70767  
Voice: 225.381.9422  
Fax: 225.381.9746

**Texas Pipe Fabrication Operations:**  
Houston  
3850 Pasadena Boulevard  
Pasadena, TX 77503  
Voice: 713.470.2254  
Fax: 713.475.4238

Paris  
1200 19th Street Southwest  
Paris, TX 75460  
Voice: 903.782.9362  
Fax: 903.782.9379



Pipe Fabrication

1.800.288.6503

[www.turner-industries.com](http://www.turner-industries.com)

